

EMS REGION 3 CONFERENCE



"Partners for Life"

April 25-May 1, 2011

Ruidoso, NM



www.emsregion3.org





Special Events!

Learning, Networking and Sharing...

Pick-Up Conference Registration Tote Bag Anytime

Whether you are attending pre-conference, core conference or both, we encourage you to pick up your registration tote bag anytime, starting Monday, April 25th at 7:30AM. Your tote bag will have a conference T-shirt, notebook, and many more items donated by friends of EMS Region III. Name badge, with class selections, must be worn at all times during conference events. No name badge – no entry into workshops.

Register Early for a Chance at a Big Prize!

Register by the early bird deadline of April 1st for a chance to win a jaw-dropping, shout out-loud, prize!!! We'll choose the winner on Sunday, May 1, 2011 at the closing general session. Must be present to win!!!

Lunch Available for Purchase during Pre-Conference Workshops

An affordable lunch will be available for purchase at the Convention Center during Pre-Conference Training Workshops, Monday, April 25 - Thursday, 28, by Dreamcatcher Cafe and Coffee House.

Important Pre-Conference Registration Information

In an attempt to keep course fees at a minimum, there will be a one-time processing fee of \$50 per student for Pre-Conference. This charge is paid only once and is the same whether you attend one workshop or several workshops. Your charge will be \$50, plus the cost or combined cost of the workshops attended. Course fees include all course materials and supplies. Any course showing **PRECOURSE WORK** indicates this class has pre-course work required to be completed before class. If you do not receive your pre-course work within two weeks of sending your registration to EMS Region III, please call 575-769-2639. We will begin shipping pre-course work after Monday, March 14, 2011. In addition, we must have a correct physical address (no PO Boxes). If you register for class and receive the pre-course material, but do not attend, you are still responsible for cost of course, unless all pre-course work is returned in unused condition. For registrations received after Friday, April 8, 2011, pre-course work will not be shipped. It is the student's responsibility to pick up the pre-course work at the registration center, Convention Center, beginning Monday, April 25, 2011. Students are still responsible for completing all pre-course work. Course completion certificates and/or course cards will be distributed at the end of each workshop. Students leaving early will not receive certificates and/or cards. Replacement cost for certificate and/or cards is \$25.00. Pre-conference program released February 28, 2011.

Apply for the Volunteer EMT Scholarship Program!

EMS Region III, through the New Mexico Trauma System Fund, has been awarded funds for a Volunteer EMT Scholarship Program. The program aims to reward current NM volunteer EMT personnel for their fine service in protecting our communities. The program is intended to support and extend EMS training beyond a community or service's normal capacity; enabling rural services and volunteer EMTs in NM to access training opportunities that are offered at the EMS Region III Conference, and which a training budget would normally not support. **Approved scholarships will be for \$125** and are available statewide for those who fit the eligibility criteria (Volunteer EMT in New Mexico) and who are interested in attending an EMS Conference known for providing quality and excellent trauma education. Upon receipt of application, you will be notified immediately of approval or denial. Applications may be faxed to (575) 769-3485. [Click here for a Volunteer EMT Scholarship Application, or call \(575\) 769-2639.](#)

EMS Region III "Partners for Life" Golf Tournament

Thursday, April 28, 10:00AM

In memory of Tim Fleming, MD, former State EMS Medical Director

Please join EMS Region III, in partnership with NativeAir, for EMS Region III's "Partners for Life" Golf Tournament at one of Golf Magazine's Top 10 New Private Golf Courses - Rainmakers -- a course that beckons players to create their own challenge or relax in their abilities. Rainmakers' represents a rare opportunity for you and your family to enjoy all the natural beauty and recreational possibilities Ruidoso, New Mexico has to offer in an exceptional championship golf club community. The heart of the Club is the golf masterpiece created by Robert Trent Jones II, one of the most celebrated golf course designers in the world. Each hole presents a

unique contrast of flowing fairways and rolling greens in world class conditions with meandering arroyos and natural rock outcroppings that frame the player's journey around the course. With each golf hole offering four to six sets of tee boxes and views that will take your breath away, we have created spectacular golf for players of all abilities.

The 2-person scramble is slated for Thursday, April 28, 2011, with a shotgun start at 10:00AM. Registration will open at 8:00AM. We have room for only 84 players (42) team, and will fill openings on a first pay/first play basis. Spots sell out fast, so don't delay submitting your registration. Event will be held, rain or shine! Your entry fee includes: 18 holes of golf - scramble format (2 mulligans per player) cart, cap, t-shirt, free range balls, green fees, favors, and catered lunch. Beverages will be available on the course. To register, [click here for the Golf Tournament Registration Form](#) -- print and complete registration form. Mail form, with payment, to EMS Region III, PO Box 1895, Clovis, NM 88102-1895; or fax form to (575) 769-3485. For more information, call (575) 769-2639.

EMS Region III "Partners for Life" Conference and Expo "Welcome Reception"

Thursday, April 28, 6:00PM

Sponsored by EMS Region III Board of Directors and Staff

Every year, EMS Region III hosts a fun and exciting Welcome Reception the night before the "Partners for Life" Conference begins. Attendees look forward to networking with other conference attendees and EMS Region III's Board of Directors and Staff in a social setting. It's the perfect way to kick-off the main event - and this year the reception is bigger and better than ever before! The Welcome Reception will be held at The Lodge at Sierra Blanca – Backyard. This is a great occasion to mingle with old and new friends as you **enjoy a catered event by Dreamcatcher's Cafe and Coffee House**, beverages, outdoor bonfire and live entertainment with a legendary guitar picker. So, plan on arriving early to grab your registration gift bag, and participate in our "welcome reception" to network with your colleagues from around New Mexico, and the country! One admission ticket to the cookout is included for all conference registrants. Extra tickets are available for purchase at the registration desk.

EMS Region III "Partners for Life" Conference Opening Ceremony to Reflect the Spirit of "Our True Heroes"

Friday, April 29, 8:30AM

Presented by the Roswell Fire Department Honor Guard

When Ruidoso celebrates the opening of the EMS Region III Annual "Partners for Life" Conference at the Ruidoso Convention Center on Friday, April 29, we'll join together to honor America's men and women in uniform. This Armed Forces Tribute will also feature the Roswell Fire Department Honor Guard, and soloist Alex Gonzales, American Medical Response.

EMS Region III "Partners for Life" Conference Banquet

Friday, April 29, 6:00PM

Sponsored by AeroCare, Texico FD, Roswell FD, Professional Ambulance

When it comes to grilling out, no one beats EMS Region III's traditional backyard cookout. This year it's steaks, chicken, and a little something extra – fried jumbo shrimp! Join us for some great grilling with the mouthwatering aroma of steaks cooking on a charcoal grill, and potatoes baking nearby. Add a secluded setting that's tucked away within a true box canyon where the mountain air is clean and the breathtaking scenery is picturesque, and you have the perfect cookout setting. These ingredients, plus a relaxing and fun affair with good food and entertainment will make this outing the most memorable ever in Region III history. One admission ticket to the cookout is included for all conference registrants. Extra tickets are available for purchase at the registration desk.

EMS Region III "Partners for Life" Conference Awards Ceremony – "A Salute to Everyday Heroes"

Friday, April 29, 7:00PM

Sponsored by Professional Ambulance

"A Salute to Everyday Heroes", Friday, April 29th, at 7:00PM will be the one "Partners for Life" event that is not to be missed. Join us at the Ruidoso Convention Center in celebrating excellence in EMS and share unforgettable special recognition award presentations. There are many noteworthy acts performed every day by EMS providers across Region III. It is not possible to recognize the hundreds of providers responsible for those many good deeds. The EMS Region III Awards program is intended to recognize excellence, to foster achievement, and to honor those in and around EMS systems whose acts and deeds stand out from the day-to-day excellence of that system. We will salute and honor the dedication of those who provide the day-to-day lifesaving services of medicine's "front line" Friday night. To nominate a "Star of Life", click [here for the Awards Nomination Form](#).

**Have questions about Continuing Education Credits? Certification?
Find the answer at Registration Center.**

EMS Region III “Partners for Life” Conference Dance with “Will Banister and the Mulberry Band”

Friday, April 29, 7:30PM

Sponsored by AeroCare, Texico FD, Roswell FD, Professional Ambulance

Will Banister, country singer/songwriter hailing from Portales, NM, is no newcomer to the music business. He has been singing in the West Texas, Eastern New Mexico area since he was 10 years old. He has amazed audiences singing Merle, Hank, Lefty and all the great country classics. His smooth voice is ideal for country music, and many fans compare his voice to George Straight, Alan Jackson and Merle Haggard.

The Mulberry Band is one of the most versatile bands in the nation, featuring Johnny and Jill Mulhair, and Duane Castleberry. Johnny Mulhair co-produced one of the biggest hit CDs in the history of country music (LeAnn Rimes "Blue"). He was also noted as top 10 guitarist in Nashville's "Music Row" magazine in 1997, and has been amazing fans with his talents for years. Jill Mulhair, is a top-notch vocalist, who is often compared to Emmylou Harris. She offers both strong lead and harmony vocals to the band, and keeps a strong steady rhythm on bass. Duane Castleberry also lends great lead and harmony vocals to the group, and is one of the area's finest drummers.

Together, Will Banister and the Mulberry Band have quickly become one of the most sought after bands in our area, playing both Country Music, and Classic Rock from the 50's, 60's, and 70's. They have played weddings, conventions, honky-tonks, fairs and festivals and much more. From George Jones to Lynard Skynard. From Johnny Rodriguez to Dire Straits. This band does it all! And now...Johnny Mulhair has recorded Will's new CD of all original songs that Will wrote for his new CD, "Turned her on to Country".

Will's CD was recorded at Johnny Mulhair's Recording Studio in Clovis. The CD is traditional country music with a modern twist, and features many of the finest musicians in the area. The CD has 11 tracks of real country music, each track as good as the last. Named Best NEW ARTIST OF 2010 by Honky-Tonk Junkies.com, you'll want to add this one to your collection! The dance is open to all conference attendees from 7:30PM – closing.

EMS Region III “Partners for Life” Conference Open Mic Night – “Karaoke the Night Away”

Saturday, April 30, 6:30PM

Sponsored by ENMU-Roswell and Cuba EMS

You don't want to miss out on the funniest night in town! Join us at The Lodge at Sierra Blanca for our 2nd annual Karaoke Night. The Lodge will be the most happening karaoke bar in town. Karaoke Night – where you are the star, is also great occasion to mingle with old and new friends as you **enjoy a catered event by Dreamcatcher's Cafe and Coffee House**, beverages, outdoor bonfire and live entertainment as well! Many of us have never rocked the mic – nor would we dare to! But, Region III has some big Karaoke devotees, so come out and sing your entire favorite hits – remember you'll be among friends! Singing is therapeutic; a sure cure for what ails you!

EMS Region III “Partners for Life” Conference Sunday Sunrise Worship Service

Sunday, May 1, 8:00AM

Sponsored by Floyd Fire Department

An interdenominational worship service of music, prayers, and reading will be held May 1, 2011, starting at 8:00, at the Convention Center. Please join Delbert and Char Rector, and members of the Floyd Fire Department, with “Extending Hope, Experiencing Faith”, at the EMS Region III “Partners for Life” Conference.



Our heartfelt thanks and appreciation go out to all our sponsors, exhibitors, speakers, volunteers, and most of all the attendees who make this conference possible!

EMS REGION III "PARTNERS FOR LIFE" CONFERENCE



Pre-Conference: Schedule-at-a-Glance

Pre-Conference Registration Opens at 7:30AM at the Convention Center

CLASSES STARTING MONDAY, APRIL 25, 2011

08:30am to 05:30pm	P01	Basic Auto Extrication Hands-On Workshop	Convention Center
08:00am to 06:00pm	P02	Wildland Firefighting (FFT2, Entry-Level Red Card)	Convention Center
08:30am to 05:30pm	P03	Advanced Medical Life Support (AMLS) Course	Convention Center
08:30am to 05:30pm	P04	Pediatric Advanced Life Support (PALS) Course	Convention Center
08:00am to 06:00pm	P05	Rope Rescue: Awareness and Operations	Convention Center
08:30am to 05:30pm	P06	Basic and First Responder Refresher	Convention Center
08:30am to 05:30pm	P07	EMT-Intermediate Refresher	Convention Center
08:30am to 05:30pm	P08	Paramedic Refresher	Convention Center
06:30pm to 09:30pm	P09	BLS for Healthcare Providers Renewal (Night Class)	Convention Center

CLASSES STARTING TUESDAY, APRIL 26, 2011

08:30am to 06:30pm	P10	Tactical Combat Casualty Care Course (TCCC)	Convention Center
08:30am to 05:30pm	P11	Introduction to ECG Recognition (Pre-ACLS)	Convention Center

CLASSES STARTING WEDNESDAY, APRIL 27, 2011

08:30am to 05:30pm	P12	Advanced Cardiac Life Support (ACLS) Course	Convention Center
08:30am to 05:30pm	P13	Pediatric, Emergency, Assessment, Recognition and Stabilization (PEARS)	Convention Center
08:30am to 05:30pm	P14	PHTLS Basic and Advanced Course	Convention Center

CLASSES STARTING THURSDAY, APRIL 28, 2011

08:30am to 05:30pm	P15	Pediatric Education for Prehospital Professionals (PEPP) BLS	Convention Center
08:30am to 05:30pm	P16	Acupressure Workshop	Convention Center
08:30am to 05:30pm	P17	Step Out of Pain – The Rossiter Way	Convention Center
01:00pm to 05:30pm	P18	Hands-On Heart and Lung Lab	Convention Center

THURSDAY, APRIL 28, 2011

08:00am to 05:00pm		EMS Region III "Partners for Life" Golf Tournament, catered by Dreamcatchers	Rainmakers Golf Course
06:00pm to 08:00pm		EMS Region III "Partners for Life" Welcome Reception, catered by Dreamcatchers	The Lodge at Sierra Blanca



Core Conference: Schedule-at-a-Glance

Core Conference Registration Opens at 7:30AM at the Convention Center

THURSDAY, APRIL 28, 2011

06:00pm to 08:00pm		EMS Region III "Partners for Life" Welcome Reception, catered by Dreamcatchers	The Lodge at Sierra Blanca
--------------------	--	--	----------------------------

FRIDAY, APRIL 29, 2011

08:00am to 04:30pm		Exhibit Hall Opens	Exhibit Hall
08:30am to 09:00am		Welcome to the EMS Region III "Partners for Life" Conference	Jan Elliott, Executive Director
08:30am to 09:00am		Special Opening Ceremonies with Presentation of Colors	Roswell Fire Dept. Honor Guard
08:30am to 09:00am		EMS Region III Board of Directors Opening Comments	James Williams, President
08:30am to 09:00am		Master of Ceremonies presented by EMS Region III Medical Director	Craig Rhyne, MD

09:00am to 10:00am	C01	Opening Keynote Address: Into the Looking Glass - "Why We Do What We Do"	Steve Murphy
10:00am to 10:30am		<i>Refreshment Break with Exhibitors</i>	<i>Exhibit Hall</i>
10:30am to 11:30am	C02	"The Sum of All Fears" – IND Detonation	Mike Richards
10:30am to 11:30am	C03	"Psych" – Understanding Psychotic Behavior and Treatment	Heather Davis
10:30am to 11:30am	C04	Are You "Bagging the Life" Out of Your Patients?	Jon Politis
10:30am to 11:30am	C05	EMS: The "X" Files	John Todaro
11:30am to 01:00pm		<i>Lunch On Your Own</i>	
01:00pm to 02:00pm	C06	"Stupid Human Tricks" – Types of Recreational Trauma	Deb Von Seggern
01:00pm to 02:00pm	C07	"Beyond the Basics" – Trends and Challenges in Pediatric Trauma	Julie Bacon
01:00pm to 02:00pm	C08	Crush Injury vs. Crush Syndrome – Why is it Important to Know?	Jason Dush
01:00pm to 02:00pm	C09	Difficult Airway Management – "A Philosophy of Success"	Rommie Duckworth
02:00pm to 02:30pm		<i>Refreshment Break with Exhibitors</i>	<i>Exhibit Hall</i>
02:30pm to 03:30pm	C10	How to Win Every "Firehouse" Argument	Rommie Duckworth
02:30pm to 03:30pm	C11	"A Thousand Ways To Die" (Kinematics of Trauma)	Heather Davis
02:30pm to 03:30pm	C12	Syncope – "A Wolf in Sheep's Clothing"	Jon Politis
02:30pm to 03:30pm	C13	"Tales From The Crypt" – (Teenage Drunk Driving Prevention)	John Todaro
03:30pm to 04:00pm		<i>Refreshment Break with Exhibitors</i>	<i>Exhibit Hall</i>
04:00pm to 05:00pm	C14	General Session: "Leading With the Heart"	Heather Davis
06:00pm to 07:00pm		EMS Region III "Partners for Life" Conference Banquet (Convention Ctr.)	Sponsored by Professional
07:00pm to 07:30pm		EMS Region III "Partners for Life" Conference Awards Ceremony (Convention Ctr.)	Ambulance, AeroCare, Texico Fire
07:30pm to 12:00am		EMS Region III "Partners for Life" Conference Dance (Convention Ctr.)	Dept., Roswell Fire Dept., and EMS Region III

SATURDAY, APRIL 30, 2011

08:00am to 04:30pm		Exhibit Hall Opens	Exhibit Hall
09:00am to 10:00am	C15	General Session: "Through the Eyes of a Rescuer"	Jason Dush
10:00am to 10:30am		<i>Refreshment Break with Exhibitors</i>	<i>Exhibit Hall</i>
10:30am to 11:30am	C16	The Silent Majority – "Geriatrics in the New Millennium"	Rommie Duckworth
10:30am to 11:30am	C17	"How General Can Weakness Be?"	Jerry Allison
10:30am to 11:30am	C18	"Little Boy Blue, What Do I Do?"	John Hill
10:30am to 11:30am	C19	Chest Trauma – Not Just Another Hole In The Wall	John Todaro
11:30am to 12:30pm		<i>Lunch On Your Own</i>	
01:00pm to 02:00pm	C20	"Sick to Death" – How Sepsis Kills	Heather Davis
01:00pm to 02:00pm	C21	"Stupid is as Stupid Does" – Stuff We Thought We Knew	Jon Politis
01:00pm to 02:00pm	C22	"Obstetrical Emergencies"	Jason Dush
01:00pm to 02:00pm	C23	"Give Me Five" – Perils, Pitfalls and Controversies	Deb Von Seggern
02:00pm to 02:30pm		<i>Refreshment Break with Exhibitors</i>	
02:30pm to 03:30pm	C24	"They're Not Dead, They're Only MOSTLY Dead!"	Rommie Duckworth
02:30pm to 03:30pm	C25	History is "King", Physical is "Queen"	Jerry Allison
02:30pm to 03:30pm	C26	"Where's the Plug?"	John Hill
02:30pm to 03:30pm	C27	The "Hard Drive" Has Crashed (Head Trauma)	John Todaro
03:30pm to 04:00pm		<i>Refreshment Break with Exhibitors</i>	<i>Exhibit Hall</i>
04:00pm to 05:00pm	C28	"Making Tough Choices" – The Code of Ethics	Heather Davis

04:00pm to 05:00pm	C29	"All Tied Up" – Restraining the Out of Control Patient	Jon Politis
04:00pm to 05:00pm	C30	Airway Case Studies – "When the Simplest Thing Made the Biggest Difference"	Jason Dush
04:00pm to 05:00pm	C31	"Kidz Play" – Pediatric Patient Care	Deb Von Seggern
05:00pm to 05:15pm		<i>Refreshment Break with Exhibitors</i>	<i>Exhibit Hall</i>
05:15pm to 06:15pm	C32	Bonus CE Session: Saving Lives – "One Community at a Time"	Jerry Allison
06:30pm to 12:00am		"Karaoke the Night Way" at The Lodge – catered by Dreamcatchers	Sponsored by ENMU-Roswell

SUNDAY, MAY 1, 2011

08:00am to 11:45am		Exhibit Hall Opens	Exhibit Hall
08:00am to 08:45am		Sunday Sunrise Worship Service sponsored by Floyd Fire Department	Convention Center
09:00am to 10:00am	C33	General Session: Why We Laugh!	Craig Rhyne
10:00am to 10:30am		<i>Refreshment Break with Exhibitors</i>	<i>Exhibit Hall</i>
10:30am to 11:30am	C34	"Eenie Meeni Minee Moe"	Deb Von Seggern
10:30am to 11:30am	C35	Yikes! "I Shouldn't Have Gotten Out of Bed This Morning"	Julie Bacon
10:30am to 11:30am	C36	I Have This "Gut Feeling"	John Hill
10:30am to 11:30am	C37	"How Sweet It Is...Or Not"	Dale Kester
11:30am to 11:45am		Final Refreshment Break	Exhibit Hall
11:45am to 12:45pm	C38	Closing General Session: "The Power to be Better"	Steve Murphy
12:45pm to 01:00pm		Closing Comments and Door Prize Drawing	EMS Region III Board and Staff



Register Smart and Save \$\$\$
Why pay more for your education?
Register today and save with the Squad Rate Discount!
For more information, call (575) 769-2639!

EMS REGION III "PARTNERS FOR LIFE" CONFERENCE

Pre-Conference Session Descriptions

Monday, April 25 through Thursday, April 28, 2011



Pre-Conference Training Workshops

In an attempt to keep course fees at a minimum, there is a one-time processing fee of \$50 per student for Pre-Conference. This charge is paid only once and is the same whether you attend one workshop or several workshops. Your charge will be \$50 plus the cost or combined cost of the workshops attended. Course fees include all course materials and supplies. Any course showing **PRECOURSE WORK** indicates this class has pre-course work required to be completed before class. If you do not start receiving your pre-course work within two weeks of sending your registration to EMS Region III, please call 575-624-7239. We will begin shipping pre-course work after Monday, **March 14, 2011**. In addition, we must have a **correct mailing address** (where you want your materials sent). If you register for class and receive the pre-course material and book, but do not attend, **you are still responsible for cost of course**, unless all pre-course work and book is returned in unused condition. For registrations received after Friday, **April 8, 2011**, pre-course work will not be shipped. It is the student's responsibility to pick up the pre-course work at the Registration booth, beginning **Monday, April 25, 2011**. The registration booth will be located inside the Exhibit Hall. Students are still responsible for completing all pre-course work. Course completion certificates and/or course cards will be distributed at the end of each workshop. Students leaving early will not receive certificates and/or cards. Replacement cost for certificate and/or cards is \$25.00.

GET WITH THE GUIDELINES! Are you the extra link? Don't know what we are talking about? Then, you need the **NEW AHA BLS Provider Course** with the **NEW 2010 AHA Guideline changes**. The course will be offered Monday night only! All courses pertaining to, or that include AHA will be taught using the **NEW 2010 AHA GUIDELINES!** So, **GET WITH THE GUIDELINES!** **NOTE:** 2010 Guidelines textbooks will be provided based on availability. If 2010 Guidelines textbooks are not available, students will be provided with 2010 Guidelines Handbooks.

CLASSES STARTING MONDAY, APRIL 25, 2011

April 25 – April 27 | 8:30am – 5:30pm | Min. 8 / Max. 24 | 24 hrs Operations

P01 – BASIC AUTO EXTRICATION HANDS-ON WORKSHOP\$260

Presented by Eastern New Mexico University-Roswell Faculty. Check our website for instructor updates: www.roswell.enmu.edu/ems

This is your chance to learn about extrication, hydraulic equipment, tools, and techniques from instructors with vast experience in providing extrication education. Topics covered in the classroom are safety, correct tool handling, and specialized extrication from large vehicles. An important segment of this class is an extensive hands-on skills practice utilizing realistic scenarios. The students learn vehicle stabilization, basic extrication techniques, new vehicle features, and patient care during extrication. **Important: Bring Protective Clothing and Eye Protection.** This class also meets the requirement for the extrication portion of the Fire Fighter II curriculum of the New Mexico Fire Fighter's Training Academy.

April 25 – April 28 | 8:00am – 6:00pm | Min. 8 / Max. 30 | 8 hrs Operations

P02 – WILDLAND FIREFIGHTING (FFT2, Entry-Level Red Card)\$240

Presented by Eastern New Mexico University-Roswell Faculty. Check our website for instructor updates: www.roswell.enmu.edu/ems

S-130/190 Basic Firefighter & Introduction to Wildland Fire Behavior (includes I-100 Introduction to ICS & L-180) S-130 is designed to provide entry level firefighter skills. Many of the units are set up so they can be taught in either the classroom or the field; field time is encouraged. A version of L-180, Human Factors on the Wildland Fire and I-100, Introduction to ICS has been included as part of this course. Credit is issued for S-130, S-190, L-180, and I-100 upon completion of this course. S-190 provides instruction in the primary factors affecting the start and spread of wildfire and recognition of potentially hazardous situations. S-190 is typically taught in conjunction with or prior to Basic Firefighter Training, S-130. It is designed to meet the fire behavior training needs of a firefighter type 2 (FFT2) on an incident as outlined in the PMS 310-1, Wildland Fire Qualification System Guide and the position task book developed for the position. Students who successfully complete all portions of the class will be "Red Card" eligible. **Wildland Protective Gear will be required – boots, pants, long-sleeve shirt, leather gloves, hard hat, and eye protection.** If your department has extra hand tools such as Polaski, shovels, and McClouds, please bring those with you.

April 25 – April 26 | 8:30am – 5:30pm | Min. 8 / Max. 24 | Certificate*

P03 – ADVANCED MEDICAL LIFE SUPPORT (AMLS) COURSE.....\$165

Presented by Eastern New Mexico University-Roswell Faculty. Check our website for instructor updates: www.roswell.enmu.edu/ems

PRE-COURSE WORK

Stayin' Alive with the NEW 2010 AHA Guidelines! Developed by NAEMT, this course offers a practical approach to adult medical emergencies and conforms to the new **AHA 2010 Guidelines**. The course design focuses heavily on the concept of differential diagnosis and eliciting medical history to arrive at a diagnosis. To accomplish this, the student will work through many case presentations found within the lectures and have opportunities to solidify concepts at various skill stations. Course Modules include: Medical Assessment, Airway Management, Hypo Perfusion, Dyspnea, Respiratory Discomfort, Respiratory Failure, Chest Pain, Altered Mental Status, Seizures, and Syncope. This course is geared toward Pre-hospital care, but is appropriate for all health care providers at all levels. Students completing this class will be awarded an NAEMT Course Completion Certificate.

* Certificate = 1 hr Airway · 2 hrs Patient Assessment · 13 hrs Medical

April 25 – April 26 | 8:30am – 5:30pm | Min. 8 / Max. 24 | Certificate*

P04 – PEDIATRIC ADVANCED LIFE SUPPORT (PALS) COURSE.....\$170

Presented by Eastern New Mexico University-Roswell Faculty. Check our website for instructor updates: www.roswell.enmu.edu/ems

PRE-COURSE WORK

Be a Change Link!! Get with the NEW 2010 AHA Guidelines! Developed by the American Heart Association (AHA), the PALS Course presents the skills and didactic information needed to handle pediatric emergencies during the first critical 10 to 20 minutes. The PALS course is a 15-hour course that will provide the participant with information needed to recognize infants and children at risk for cardiopulmonary arrest. Students are provided with information and strategies needed to prevent cardiopulmonary arrest in infants and children, as well as the cognitive and psychomotor skills needed to resuscitate and stabilize infants and children in respiratory failure, shock, or cardiopulmonary arrest based on the new **2010 AHA Guidelines**. The target audience for this course includes pediatricians, emergency physicians, family physicians, nurses, prehospital healthcare professionals, respiratory therapists, and other healthcare professionals whose jobs require completion of a written evaluation and successful skill performance. The course consists of written examination and teaching/testing practical stations. The PALS course is designed with minimal lecture and emphasized hands-on skills. **This course has a prerequisite of Basic Life Support for Health Care Providers.** Upon successful completion of the course, students will be awarded an AHA PALS Certification Card.

* Certificate = 1 hr Trauma Emerg. · 1 hr Preparatory · 2 hrs Airway · 3 hrs Pt. Assess. · 6 hrs Spec. Consider. · 3 hrs Med. Emerg.

April 25 – April 28 | 8:00am – 6:00pm | Min. 8 / Max. 20 | 40 hrs Operations

P05 – ROPE RESCUE: AWARENESS AND OPERATIONS\$250

Presented by Eastern New Mexico University-Roswell Faculty. Check our website for instructor updates: www.roswell.enmu.edu/ems

This 40-hour course meets the first two of the three levels of training described in NFPA 1670 Standard on Operations and Training for Technician Search and Rescue Incidents, Chapter 6, 2004 Edition. A mixture of classroom instruction and practical skills experiences looks at basic rope use concepts incident organization and rigging of equipment used to affect a rescue. **Leather boots and leather gloves, supplied by the student, are required.** Helmets and harnesses will be provided, but students may use their own helmet and harness, and other personal protective equipment if it passes NFPA and NMFTA standards. This is a prerequisite for Firefighter II Certification. Upon successful completion of the course, students will be awarded a certificate from the New Mexico State Fire Academy.

April 25 – April 27 | 8:30am – 5:30pm | Min. 8 / Max. 100 | Certificate *

P06 – BASIC AND FIRST RESPONDER REFRESHER.....\$130

Presented by Eastern New Mexico University-Roswell Faculty. Check our website for instructor updates: www.roswell.enmu.edu/ems

This refresher is a distinctive blend of case studies and scenarios to challenge the student. The format will involve lecture, small group interaction, and hands-on scenarios. This refresher meets the renewal requirements of New Mexico and National Registry of EMTs. Upon successful completion First Responders will receive a Course Completion Certificate and 8 hours of Medical CEs from ENMU-Roswell. EMT-Basics will receive a Course Completion Certificate from ENMU-Roswell. CPR renewal is not offered within this course. **If the course is taken annually, the “off year” refresher certificate can be used for CEs.**

* Certificate = 1 hr Prep. · 2 hrs Airway · 3 hrs Pt. Assess. · 6 hrs Medical · 6 hrs Trauma · 4 hrs Special Consider. · 2 hrs Operations

April 25 – April 27 | 8:30am – 5:30pm | Min. 8 / Max. 70 | Certificate *

P07 – EMT-INTERMEDIATE REFRESHER.....\$130

Presented by Eastern New Mexico University-Roswell Faculty. Check our website for instructor updates: www.roswell.enmu.edu/ems

This refresher is designed with the special needs of the EMT-Intermediate. Included in this refresher is a distinctive blend of case

studies and scenarios to challenge the student. Special attention will be made towards the EMT-I scope of practice, including Drug Calculation, Pharmacology, IV and IO therapy, and scenarios that focus on the ILS level of care. The format will involve lecture, small group interaction, and hands-on scenarios. This refresher meets the renewal requirements of the New Mexico and National Registry of EMTs (I-85). Upon successful completion the student will receive a Course Completion Certificate from ENMU-Roswell. CPR renewal is not offered within this course. **If the course is taken annually, the “off year” refresher certificate can be used for CEs.**

* Certificate = 1 hr Prep. · 2 hrs Airway · 3 hrs Pt. Assess. · 6 hrs Medical · 6 hrs Trauma · 4 hrs Special Consider. · 2 hrs Operations

April 25 – April 28 | 8:30am – 5:30pm | Min. 8 / Max. 24 | Certificate *

P08 – PARAMEDIC REFRESHER\$285

Presented by Eastern New Mexico University-Roswell Faculty. Check our website for instructor updates: www.roswell.enmu.edu/ems

PRE-COURSE WORK

This paramedic refresher is a distinctive blend of case studies and scenarios designed to challenge the student. The format will involve lecture and small group interaction with hands-on scenarios. This refresher meets renewal requirements of the New Mexico and National Registry of EMTs. The in-class portion of the course will satisfy 32 hours of the 48 hour requirement and completion of the pre-course self study packet will satisfy the additional 16 hours required. Upon successful completion of the course (including pre-course work), students will receive a Course Completion Certificate from ENMU-Roswell. **PALS and ACLS renewal are not offered within this course. If the course is taken annually, the “off year” refresher certificate can be used for CEs.**

* Certificate = 3 hrs Prep. · 4 hrs Airway · 4 hrs Pt. Assess. · 18 hrs Medical · 10 hrs Trauma · 6 hrs Special Consider. · 3 hrs Operations

April 25 – 1 Day | 6:00pm – 9:30pm | Min. 8 / Max. 24 | Certificate *

P09 – BLS FOR HEALTHCARE PROVIDERS RENEWAL (NIGHT CLASS 6:00 pm to 9:30 pm)\$60

Presented by Eastern New Mexico University-Roswell Faculty. Check our website for instructor updates: www.roswell.enmu.edu/ems

“Link” up in this course! This course covers the principles and techniques of basic cardiac life support, prudent heart living, risk factors, and action for survival according to the **2010 AHA Guidelines**. Students will also acquire skills in airway and breathing management using adjuncts, use of a semi-automatic defibrillator, and initial management of life threatening situations. Upon completion, students are eligible for Basic Life Support Certification by the American Heart Association. **CPR is a re-licensure requirement and can’t be used for CEs unless taken annually.**

* Certificate = 1 hour Airway · 2 hours Medical

CLASSES STARTING TUESDAY, APRIL 26, 2011

April 26 – April 28 | 8:30am – 6:30pm | Min. 8 / Max. 20 | Times vary. Course schedule will be mailed. Certificate *

P10 – TACTICAL COMBAT CASUALTY CARE COURSE (TCCC)\$275

Presented by Eastern New Mexico University-Roswell Faculty. Check our website for instructor updates: www.roswell.enmu.edu/ems

“PHTLS on Steroids”! The National Association of EMTs (NAEMT) Tactical Combat Casualty Care Course (TCCC) is the only national recognized course of this type. TCCC was created in the mid-1990 by US Military Medical Special Operation members in response to unique needs of the Tactical Environment they were working in. This resulted in the formation of the Committee of Tactical Combat Casualty Care (CoTCCC). From CoTCCC, guidelines have been established to care for wounded in the Tactical Environment. Due to global changes, the Tactical Environment is not limited to the battlefield but is also found in Law Enforcement Operations. The TCCC course is designed with both areas of care in mind. This TCCC course is for Medical Providers who are responsible for providing care in one of these areas or is interested in learning more and developing skills to respond in this unique area of care. This is a three-day class and will involve strenuous activity in austere condition (low light, confined space, wet, dirt). “You will get dirty.” Topics to be covered include but are not limited to: Care under Fire, Tactical Field Care and Casualty Evacuation (or CASEVAC) Care. Upon successful completion students will be issued a NAEMT TCCC Provider card and CE certificate. In addition students will receive a Tactical Field Kit to keep after the class. Students should come prepared for this class with suitable clothing (pants, no shorts), close-toed shoes/boots, eye protection, sunscreen, and any other personal protective equipment or necessities. **Current Operators who have their own gear are strongly encouraged to bring their gear (ruck sacks, body armor, knee pads, helmets, and other protective gear) to class, with the exception of firearms.** This course is open to any level of EMS Provider.

* Certificate = 2 hrs Preparatory · 2 hrs Airway · 14 hrs Trauma Emergencies · 4 hrs EMS Ops · 2 hrs Pt. Assess.

April 26 | 8:30am – 5:30pm | Min. 8 / Max. 30 | 8 hrs Medical

P11 – INTRODUCTION TO ECG RECOGNITION (PRE-ACLS).....\$85

Presented by Eastern New Mexico University-Roswell Faculty. Check our website for instructor updates: www.roswell.enmu.edu/ems

PRE-COURSE WORK

This course was created for initial ACLS students, or those who do not use ACLS skills often and find the 2-day ACLS class intimidating. This class is also for students who just need a good review on ECG recognition. This workshop is designed to reduce

anxiety by familiarizing students with basic electrophysiology, waveform and segment morphology, and the methodology used for basic ECG interpretation.

* Certificate = 8 hrs Medical Emergencies

CLASSES STARTING WEDNESDAY, APRIL 27, 2011

April 27 – April 28 | 8:30am – 5:30pm | Min. 8 / Max. 24 | Certificate *

P12 – ADVANCED CARDIAC LIFE SUPPORT (ACLS) COURSE\$155

Presented by Eastern New Mexico University-Roswell Faculty. Check our website for instructor updates: www.roswell.enmu.edu/ems

PRE-COURSE WORK

Keep em' Alive with the NEW 2010 AHA Guidelines! Advanced Cardiac Life Support (ACLS) includes the didactic information about the management of cardiac arrest including rhythm recognition, drugs, and protocols following the new **2010 AHA Guidelines**. The course provides skills practice for: airway management, bradycardia, tachycardias, ventricular fibrillation, asystole, pulseless electrical activity, AMI and Stroke, and use of defibrillators and automated external defibrillators. **This course has a prerequisite of Basic Life Support for Health Care Providers.** Upon successful completion of the course, students will be awarded an AHA ACLS Certification Card. Students without previous ECG recognition skills or those who feel uncomfortable with their skills are strongly encouraged to take the Introduction to ECG Recognition class on Tuesday, April 26th. **Not eligible for EMT-P CE's unless taken annually.**

* Certificate = 9 hrs Medical Emergencies · 1 hr Preparatory · 2 hrs Airway · 4 hrs Pt. Assess.

April 27 | 8:30am – 5:30pm | Min. 8 / Max. 24 | Certificate *

P13 – PEDIATRIC EMERGENCY ASSESSMENT RECOGNITION AND STABILIZATION (PEARS)\$120

Presented by Eastern New Mexico University-Roswell Faculty. Check our website for instructor updates: www.roswell.enmu.edu/ems

PRE-COURSE WORK

Are you the missing Link? Get with the Guidelines! Pediatric Emergency Assessment Recognition and Stabilization (PEARS) is a new American Heart Association Intermediate Course for credentialed healthcare providers who infrequently see critically ill children. The main focus of PEARS is prevention, and specifically the assessment, recognition and stabilization of pediatric victims at risk of severe cardiopulmonary distress. Course content covers pediatric assessment, recognition and management of respiratory distress and failure, recognition and management of shock, respiratory and circulatory management, resuscitation team concept and Chain of Survival, according to the new **2010 AHA Guidelines**. The audience for this course is designed to meet the needs of First Responder, EMT-Basic, and EMT-Intermediate to provide care to pediatric patients. Upon successful completion students will be awarded a course completion card from the American Heart Association.

* Certificate = 8 hours of Pediatric

April 27 – April 28 | 8:30am – 5:30pm | Min. 8 / Max. 24 | Certificate *

P14 – PHTLS BASIC AND ADVANCED COURSE\$185

Presented by Eastern New Mexico University-Roswell Faculty. Check our website for instructor updates: www.roswell.enmu.edu/ems

PRE-COURSE WORK

Developed by the National Association of Emergency Medical Technicians (NAEMT), The Pre-Hospital Trauma Life Support (PHTLS) class is designed to provide the practicing prehospital healthcare professional with a specific body of knowledge related to the assessment and care of the trauma patient. The PHTLS class is an intensive 16-hour course, which stresses the principles of the Platinum 10 minutes, the Golden hour, and the critical actions that must take place during these times. PHTLS picks up where other educational programs leave off. This course focuses on how to identify, stabilize, treat, and transport trauma patients with the highest level of care, which gives them the greatest chance of survival. Studies indicate patients have a greater chance of survival following a traumatic incident when their healthcare providers have taken a PHTLS course. PHTLS is designed to provide the practicing pre-hospital responder with a specific body of knowledge of pre-hospital assessment and management of the trauma patient. PHTLS is a continuing education program and contains information that may be review for some or all course participants. Upon successful completion, the student will be awarded a NAEMT Course Completion Certificate.

* Certificate = 10 hours Trauma · 1 hr Preparatory · 2 hrs Airway · 2 hrs Pt. Assess. · 1 hr Special Considerations

Register Smart and Save with the Squad Rate Discount!
We know budgets are tight, so prices are the same this year –
and, even more affordable pre-conference workshops!
Why pay more for your education, so register today and save!

CLASSES STARTING THURSDAY, APRIL 28, 2011

April 28 | 8:30am – 5:30pm | Min. 8 / Max. 40 | Combination CEs*

P15 – PEDIATRIC EDUCATION FOR PREHOSPITAL PROFESSIONALS (PEPP) BLS\$145

Presented by Eastern New Mexico University-Roswell Faculty. Check our website for instructor updates: www.roswell.enmu.edu/ems

PRE-COURSE WORK

PEPP is a comprehensive course for prehospital medical information in the emergency care of infants and children. BLS PEPP is designed to give First Responders and EMT-Basics the education, skills, and confidence they need to effectively treat pediatric patients. Developed by the American Academy of Pediatrics, BLS PEPP specifically teaches prehospital professionals how to better assess and manage ill or injured children. BLS PEPP combines complete medical content with dynamic features and an interactive course to better prepare prehospital professionals for the field.

* 2 hours Airway · 1 hr Pt. Assess. · 2 hrs Trauma Emergencies · 3 hrs Medical Emergencies

April 28 | 8:30am – 5:30pm | Min. 8 / Max. 30 | 8 hrs Preparatory

P16 – ACUPRESSURE WORKSHOP\$50

Presented by Eastern New Mexico University-Roswell Faculty. Check our website for instructor updates: www.roswell.enmu.edu/ems

Unique to New Mexico EMS, is the inclusion of Acupressure in the Scope of Practice for application in Prehospital care for all levels. Yet, many providers have little understanding of this skill. Many natural therapy techniques are based around acupressure points and meridians; so this course is a perfect starting point for anyone interested in tactile therapies. The hands-on workshop introduces you to the subtle, energetic system within the human body as it was understood by ancient Chinese scholars. This workshop will enhance your understanding of the meridian system; you will be shown and taught the basic acupressure techniques. This knowledge and understanding of acupressure points and meridians and the crucial role they play in healing will allow you to apply the learning to your health, well-being and approach to life.

* Certificate = 8 hrs Preparatory

April 28 | 8:30am – 5:30pm | Min. 8 / Max. 30 | 8 hrs Preparatory

P17 – STEP OUT OF PAIN – THE ROSSITER WAY\$60

Presented by Eastern New Mexico University-Roswell Faculty. Check our website for instructor updates: www.roswell.enmu.edu/ems

You deserve to be pain-free now! Improve your quality of life by releasing chronic pain with a powerful, simple stretching technique. Is chronic soft tissue pain or structural pain keeping you from enjoying your active lifestyle or getting in the way of your work? During this class you will learn 6 stretches to eliminate upper body pain: shoulder or neck pain, tennis elbow, carpal tunnel, upper back pain and more! Companies that utilize the Rossiter System of stretches can achieve a 75% to 95% drop in direct medical expenses in the first year. Now you can have that kind of results in your personal life! Results guaranteed. If you don't leave with a significant reduction in your pain – We will refund your class fee on the spot!

* Certificate = 8 hrs Preparatory

April 28 | 1:00pm – 5:30pm | Min. 5 / Max. 24 | 4.5 hrs Preparatory

P18 – HANDS ON HEART AND LUNG LAB\$100

Presented by Eastern New Mexico University-Roswell Faculty. Check our website for instructor updates: www.roswell.enmu.edu/ems

This is not a formal affair. Leave your tux and formals at home. Dress to get your hands dirty.

The beginning is a review of parts and pieces of the heart and lungs and what they do. Then we dig in and, in small groups, cut apart and explore the parts and pieces and how they connect together. In the end you will discover a virtual reality regarding heart and lungs and will have a new perspective when you look at your books and evaluate your patients.

* Certificate = 4 hrs Preparatory



EMS REGION III "PARTNERS FOR LIFE" CONFERENCE

Core Conference Session Descriptions

Friday, April 29 – Sunday, May 1, 2011

Friday, April 29, 2011

OPENING KEYNOTE ADDRESS: 9:00AM – 10:00AM

C01 – (PART I) INTO THE LOOKING GLASS - "WHY WE DO WHAT WE DO"

Steve Murphy, EMT-P, Battalion Chief - University Place Fire Department, Tacoma, WA



Why are you involved in EMS? Certainly not the money! What motivates you to continue in a profession that can tear at your very soul one day and provide ultimate joy and satisfaction the next? Why do you continue with your insatiable desire to learn? In this session, Part 1 of a two-session lecture, Steve will change the way you view your reasons to continue, and help you take an honest look at "why we do what we do." During this conference you will learn, both formally and informally and leave with a strengthened desire for the pursuit of excellence in this profession you have chosen. Steve will challenge you to make your life a "masterpiece." After Part I, you will join the ranks of those people, who live what they teach, who walk their talk. Steve's motivational conference opener will have you committed...to a cause, to

making a difference and to improving lives. We hope that after attending this session, you will see the potential in any given moment, realize how the small things really do matter, and have the confidence to unleash. **What would happen if...** **to be continued** on Sunday, May 1st. **It's a conference closer you don't want to miss!**

(1.0 hour CE – Preparatory)

BREAKOUT SESSIONS: 10:30AM – 11:30AM

C02 – "THE SUM OF ALL FEARS" - 10-KILOTON IMPROVISED NUCLEAR DEVICE (IND) DETONATION

Mike Richards, MD – Chief of Staff, UNM Hospital, Albuquerque, NM

For most emergency responders, the worst case scenario is a bus load of pregnant females that has just hit a gasoline tanker head on in front of a grade school at noon. This session will take you well beyond your greatest fears to the unimaginable. Improvised nuclear device (IND) detonation, Homeland Security Council's National Planning Scenario #1, is "The Sum of All Fears", a 10-kiloton detonation in a large metropolitan area. The effects of the damage from the blast, thermal radiation, prompt radiation, and the subsequent radioactive fallout have been well modeled. So have the required actions of the initial first responders. However, some of these actions may be contrary to your natural instincts. Come and learn the five things every first responder should know about the unthinkable.

(1.0 hour CE – Preparatory)

C03 – "PSYCH" – UNDERSTANDING PSYCHOTIC BEHAVIOR AND TREATMENT

Heather Davis, MS, NREMT-P - Paramedic Education Program Director, UCLA-Daniel Freeman, Los Angeles, CA

"There's something strange about our patient, but I can't quite put my finger on what it is". Over thirty percent of the population has some psychiatric pathology, which means that psychiatric or behavioral issues surface regularly on EMS calls. The inability to distinguish one condition from another, limits providers from predicting a patient's behavior. This session offers a unique perspective on mental issues, reviews the pathophysiology of common behavioral disorders and how they manifest in our patients. In this informative, but entertaining session, treatment strategies, both chronic and acute, will be discussed and visualized through popular media examples.

(1.0 hour CE – Medical Emergencies)



C04 – ARE YOU "BAGGING THE LIFE" OUT OF YOUR PATIENTS?

Jon Politis, MPA, NREMT-P - Chief of Colonie EMS, Latham, NY

We used to think the basic skill of ventilation was simple and uncomplicated...or, just "bag'em". Come to find out successful ventilation and oxygenation is deceptively complicated in how it can impact blood flow, blood chemistry, cerebral perfusion and ultimately patient outcomes. This presentation is a "back to basics" presentation on the "ABCs" of ventilation and oxygenation based upon current resuscitation science.

(1.0 hour CE – Patient Assessment)

C05 – EMS: THE "X" FILES



John Todaro, BA, REMT-P, RN - Executive Director, Low Country Regional EMS Council, Charleston, SC

"Imagine if you will a life of waiting... waiting for the unknown. Knowing that sooner or later, it will happen...And it will happen to you". Sounds like EMS to me. For educational purposes, the seal on the EMS "X" Files will be broken in this out-of-the-ordinary session, giving the program participants a glimpse into the bizarre and unusual, and for many of us...the "unknown". Using a grand rounds approach each "X" file will be reviewed and analyzed. The truth is out there. Can you handle it?

(1.0 hour CE – Medical Emergencies)

BREAKOUT SESSIONS: 1:00PM – 2:00PM

C06 – "STUPID HUMAN TRICKS" - TYPES OF RECREATIONAL TRAUMA

Deb Von Seggern-Johnson, NREMT-P - UNMC EMS/Trauma Coordinator, Omaha, NE

Always and inevitably each of us underestimates the number of "Darwin Award" candidates there are in circulation. A person is deemed stupid if they cause damage to another person or group of people without experiencing personal gain, or even worse, causing damage to themselves in the process. Non-stupid people always underestimate the harmful potential of stupid people; they constantly forget that at any time anywhere, and in any circumstance, dealing with or associating themselves with stupid individuals invariably constitutes a costly error. This session will show a humorous side of when "fun" goes bad. Deb will discuss treatment modalities for the management of these adventurous patients caught up in "abnormal, and sometimes humorous," situations.

(1.0 hour CE – Trauma Emergencies)

C07 – "BEYOND THE BASICS" - TRENDS AND CHALLENGES IN PEDIATRIC TRAUMA

Julie Bacon, RNC, BA, CPEN, N-CPT, Flight Nurse – All Children's Hospital, Oakland, FL

"Our children are threatened by a killer that strikes without warning. It attacks anywhere and everywhere, the moment your back is turned, in the blink of an eye. The killer's name is Trauma". Trauma is the most common cause of mortality and morbidity in the US pediatric population, more than all other causes combined! Are there patterns in pediatric trauma that might give us a clue to injury? What are the differences in pediatric and adult anatomy and physiology that effect trauma in children? This lecture focuses on the most common presentations in head, abdominal and thoracic trauma.

(1.0 hour CE – Special Consideration - Pediatric)

C08 – "CRUSH INJURY VS CRUSH SYNDROME" - WHY IS IT IMPORTANT TO KNOW?

Jason Dush, CCEMT-P, FP-C, Arlington Fire Department, CareFlight, Arlington, TX



Two hundred six bones, countless muscles, nerves, blood vessels, and supporting structures weave together to form the musculoskeletal system. Although injuries to this system are common and rarely fatal, they often result in severe pain, blood loss and potential long-term disability. Adverse outcomes can often be prevented with prompt temporary measures, but which ones? This lecture is designed to discuss commonly misdiagnosed and mistreated injuries in the field. Full of visuals and simple definitions, this session will offer all EMS providers a better understanding on crush injuries.

(1.0 hour CE – Trauma Emergencies)

C09 – DIFFICULT AIRWAY MANAGEMENT - "A PHILOSOPHY OF SUCCESS"

Rommie Duckworth, EMT-P - Ridgefield Fire Department, Ridgefield, CT

With an enthusiastic and "real world" approach to fundamentals, this presentation evaluates new, upcoming devices and techniques in airway management, as well as novel ways to use the tools that we already have in place to manage the difficult airway. In this

session you will learn that less is more, as BLS techniques are used to improve ALS airway management in even the toughest of airway emergencies. If you are serious about airway management, this is a class is a must. (1.0 hour CE – Airway Management)

BREAKOUT SESSIONS: 2:30PM – 3:30PM



C10 – HOW TO WIN EVERY "FIREHOUSE" ARGUMENT

Rommie Duckworth, EMT-P - Ridgefield Fire Department, Ridgefield, CT

"The hardest thing to learn in life is which bridge to cross and which to burn." It is a fact that Americans spend 68% of our day bombarded by people trying to influence our decisions. Likewise, we spend another 52% trying to persuade others. This presentation will help you learn to quickly identify myths and factual errors (like the one above) and improve your critical thinking skills to avoid falling victim to logical fallacies and other arguments that sound good, but don't hold water.

(1.0 hour CE – Preparatory)

C11 – "A THOUSAND WAYS TO DIE" (Kinematics of Trauma)

Heather Davis, MS, NREMT-P - Paramedic Education Program Director, UCLA-Daniel Freeman, Los Angeles, CA

"What the....? Now how in the world did that happen?" Sound serious? The forces involved in traumatic injuries are serious, and are often the single biggest determinate of outcome for these patients. If you reach the patient's side and do not know from how far they fell or if the steering wheel is bent, you are already behind the eight-ball in trauma patient assessment! In this thought provoking session, attendees will learn about the deadly forces involved in trauma and how to predict injuries before they are noticeable for major trauma patients.

(1.0 hour CE – Trauma Emergencies)

C12 –SYNCOPE - "A WOLF IN SHEEP'S CLOTHING"

Jon Politis, MPA, NREMT-P - Chief of Colonie EMS, Latham, NY

"I'm not sure what happened. I think she just fainted." Syncope or fainting is perhaps one of the most under assessed and minimized complaints that many EMS providers see. In fact, syncope is a potentially lethal chief complaint and needs to be worked up with the same sense of urgency as chest pain, breathing difficulty and other serious complaints. In this interactive case study based presentation, the major causes of syncope will be discussed along with assessment and treatment of the various causes.

(1.0 hour CE – Medical Emergencies)

C13 – "TALES FROM THE CRYPT" - (Teenage Drunk Driving Prevention)

John Todaro, BA, REMT-P, RN - Executive Director, Low Country Regional EMS Council, Charleston, SC

"That was the worst accident that I have ever been too. They were just kids. And the thing that sticks in my mind was that it could have been prevented". This shocking and eye-opening program is designed to teach public safety agencies to develop and present a program which uses a dramatic recreation of a motor vehicle accident to expose teenagers to the consequences of drunk driving. Learn to present a recreation that exposes the teenagers to all the aspects of how fire rescue, EMS, law enforcement and the medical examiner's office interact during this type of incident. This is a program that our kids deserve.

(1.0 hour CE – Preparatory)

GENERAL SESSION: 4:00PM – 5:00PM

C14 – "LEADING WITH THE HEART"

Heather Davis, MS, NREMT-P - Paramedic Education Program Director, UCLA-Daniel Freeman, Los Angeles, CA

"It takes courage not only to make decisions, but to live with those decisions afterward." – Coach K

How did Coach K make the Blue Devils one of the most successful basketball teams in history? How did Jack Welch lead General Electric to be one of the most diverse and profitable companies in the world? They lead with their heart (and sometimes their gut!), that's how. Heather will explore styles of power, influence, and persuasion through the leadership role of basketball coach Mike Krzyzewski, setting the stage for a discussion of how different styles are appropriate for different people and different situations. Come learn how humanity and genuinely caring about people can produce extraordinary results for your team and your patients by leading with heart! (1.0 hour CE – Preparatory)



Saturday, April 30, 2011

GENERAL SESSION: 9:00AM – 10:00AM



C15 – "THROUGH THE EYES OF A RESCUER"

Jason Dush, CCEMT-P, FP-C, Arlington Fire Department, CareFlight, Arlington, TX

"I looked and there before me was a pale horse. Its rider was named Death!" It happens so fast you don't have time to think about it...until later. Public service providers always see ourselves as the helper, but what happens when we become the ones needing to be helped? Jason will take you through a journey of challenges facing his own mortality as a public servant provider. Are you prepared to face your own mortality?

(1.0 hour CE –Preparatory)

BREAKOUT SESSIONS: 10:30AM – 11:30AM

C16 – THE SILENT MAJORITY - "GERIATRICS IN THE NEW MILLENNIUM"

Rommie Duckworth, EMT-P - Ridgefield Fire Department, Ridgefield, CT

The baby-boomers are retiring! The proportion of the elderly in America is greater today than ever before and will continue to grow even larger. What's more, the elderly tend to be our sickest and most challenging patients. What signs and symptoms may indicate common disease processes, the normal signs of aging or special needs of the geriatric patient? With a focus on every aspect of caring for your patient, this presentation answers your questions so that you'll love what you learn.

(1.0 hour CE – Special Considerations – Geriatrics)

C17 – "HOW GENERAL CAN WEAKNESS BE?"

Jerry Allison, MD, Elk Grove, CA

Weakness is a very common, but often vague chief complaint encountered in the pre-hospital setting. There are numerous differentials that can range from minor to life-threatening problems. The role of the emergency provider is to quickly assess the patient, identify high probability differentials, and methodically rule them in or out, in just a few minutes. Using the concept of "History is King" this presentation will discuss the assessment of general weakness and how to simply and systematically rule in and out the various causes so that you can begin treating the appropriate problems as quickly as possible.

(1.0 hour CE – Medical Emergencies)

C18 – "LITTLE BOY BLUE, WHAT DO I DO?"

John Hill, EMT-P - Director of Emergency Medical Services, Spirit Lake, IA

Patient assessment is, without a doubt, the most important skill that you will learn. It **IS** the basis from which ALL other decisions will be made. Add pediatrics into the equation and your heart rate just doubled. In this session, John will cover a "rapid first impression" assessment along with the why, how and when to perform a two part non-threatening physical examination; the initial assessment and the detailed physical exam. You should leave this session with a clear understanding of this unique pediatric assessment, and the specific communication and assessment techniques that alleviate children's fears in the face of any sort of emergency.

(1.0 hour CE – Patient Assessment - Pediatrics)



C19 – CHEST TRAUMA - "NOT JUST ANOTHER HOLE IN THE WALL"

John Todaro, BA, REMT-P, RN - Executive Director, Low Country Regional EMS Council, Charleston, SC

"The steering wheel is missing. I think we have a problem." Chest trauma is a significant source of morbidity and mortality in the United States. It is often sudden and dramatic. It accounts for 25% of all traumatic deaths and can present with a dozen immediate and potentially life-threatening injuries. Plan to join John for this "chest opening" session that presents a new look at an "age old" trauma, including a review of the pathophysiology of potential devastating injuries and current treatment of common, but life-threatening conditions.

(1.0 hour CE – Trauma Emergencies)

Register Smart and Save with the Squad Rate Discount! We know budgets are tight, so prices are the same this year – and, even more affordable pre-conference workshops!
Why pay more for your education, so register today and save!

BREAKOUT SESSIONS: 1:00 PM – 2:00 PM

C20 – “SICK TO DEATH” – HOW SEPSIS KILLS

Heather Davis, MS, NREMT-P - Paramedic Education Program Director, UCLA-Daniel Freeman, Los Angeles, CA

More Americans die annually from sepsis than from prostate cancer, breast cancer and AIDS *combined*! Think sepsis is a hospital problem? Think again! Sepsis affects patients in the places we find them; at home, in nursing homes, and care facilities. Come find out what you can do to detect and treat this deadly illness in the field.

(1.0 hour CE – Medical Emergencies)

C21 – “STUPID IS AS STUPID DOES” - STUFF WE THOUGHT WE KNEW

Jon Politis, MPA, NREMT-P - Chief of Colonie EMS, Latham, NY

“We have to stop, even if we aren’t on duty”. “High flow oxygen is beneficial”. “EMTs work under the Medical Directors license”. As Forrest Gump said “stupid is as stupid does”. There are many things that are routinely taught in EMS instruction that are just mythology. Find out the truth in this revealing “evidence based” session that will provide you with a list of the “top ten” myths of EMS clinical care and operations.

(1.0 hour CE – Preparatory)

C22 – “OBSTETRICAL EMERGENCIES”

Jason Dush, CCEMT-P, FP-C, Arlington Fire Department, CareFlight, Arlington, TX

“Now be honest. How many babies have you really delivered in the field? Are you ready if it happens during this shift?” This exciting lecture is geared for all fire-based EMS, third city EMS services, private EMS providers, and educators. This presentation will cover the nuts and bolts of obstetrical emergencies, which can seem like routine and boring medicine most of the time. How many people are prepared and knowledgeable of the “Real Deal” obstetrical emergency? This presentation is filled with great educational slides and cases of real obstetrical emergencies and delivery complications that pre-hospital providers may be faced with.

(1.0 hour CE – Medical Emergencies)



C23 – “GIVE ME FIVE” - PERILS, PITFALLS AND CONTROVERSIES

Deb Von Seggern-Johnson, NREMT-P - UNMC EMS/Trauma Coordinator, Omaha, NE

We just arrived on scene and found our patient. The call came in as “Man Down”. Down from what? We look at our patient and he sure looks down... and unconscious too. No one around to tell us what happened. Well I guess we better get started and find out what we need to do to get our patient “un-down.” Let’s start with assessment. Assessment is the most important skill in your “EMS Tool Box”. It is the foundation of patient care. This session will take you through an easy way to memorize and then apply your assessment to almost every aspect of taking care of your patient, beyond the physical exam. Attendees will leave with a better understanding of the importance of an Initial/Primary Assessment and the “SAMPLER” history.

(1.0 hour CE – Patient Assessment)

BREAKOUT SESSIONS: 2:30PM – 3:30PM

C24 – “THEY’RE NOT DEAD, THEY’RE ONLY MOSTLY DEAD!”



Rommie Duckworth, EMT-P - Ridgefield Fire Department, Ridgefield, CT

Do some cardiac arrests make you feel like you’re just going through the motions? If we got into EMS to save lives, then why doesn’t it work that way in real life? Can we really save MOST of the people in V-Fib? When should we “call” the code? Most importantly, how are the 2011 changes supposed to work in the real world? Using his insight as AHA National Faculty Rom Duckworth presents an entertaining and energetic debate about how, when and why resuscitation should be run in 2011, connecting the latest research with the way things are really done on the street.

(1.0 hour CE – Medical Emergencies)

C25 – HISTORY IS “KING”, PHYSICAL IS “QUEEN”

Jerry Allison, MD, Elk Grove, CA

Are we clinicians or technicians? How do we make the best “diagnosis” or consider alternative diagnoses? History-taking is the most frequent skill we use in medicine-and pre-hospital care. It is a basic skill and it is also an advanced skill as it is something that we

should get better with time. What makes us a better clinician? Is it knowing what to ask, when to ask it, how it should be asked, and why we are asking it? A proper assessment is not just to identify the diagnosis, but to help us navigate through all the possible (usually serious) differential diagnoses as well. Using the concept of "History is King", "Physical is Queen" (and labs may or may not help you), this presentation will start with a "Back to Basics" approach and then expand to a more advanced discussion on a systematic approach used by physicians in obtaining a quick, concise, thorough and accurate history every time.

(1.0 hour CE – Patient Assessment)

C26 – "WHERE'S THE PLUG?"

John Hill, EMT-P - Director of Emergency Medical Services, Spirit Lake, IA

In this presentation, John will review the components of the circulatory system. We will discuss the physiology of the blood and examine the different types of injuries that often lead to challenges in hemorrhage control. We examine the normal volumes and the different signs and systems as the blood volume is depleted. Various treatment modalities are also reviewed. This presentation contains awesome visual examples and contains valuable information for all levels of providers.

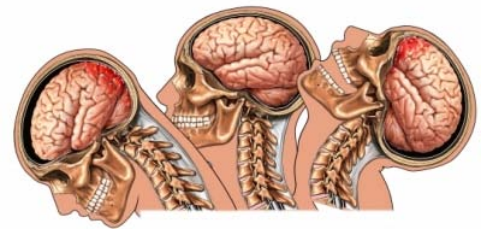
(1.0 hour CE –Trauma Emergencies)

C27 – THE "HARD DRIVE" HAS CRASHED (Head Trauma)

John Todaro, BA, REMT-P, RN - Executive Director, Low Country Regional EMS Council, Charleston, SC

Every year, millions of people experience a head injury. Most of these injuries are minor because the skull provides the brain with considerable protection. The symptoms of minor head injuries usually go away on their own, but more than half a million head injuries a year are severe enough to require hospitalization. Learning to recognize a serious head injury and providing proper management can make the difference in saving someone's life. Join us in this graphic, interactive, and very informative session.

(1.0 hour CE – Trauma Emergencies)



BREAKOUT SESSIONS: 4:00PM – 5:00PM

C28 – "MAKING TOUGH CHOICES" - THE CODE OF ETHICS

Heather Davis, MS, NREMT-P - Paramedic Education Program Director, UCLA-Daniel Freeman, Los Angeles, CA

This session promises to be thought provoking and probably controversial! Standards of conduct for EMS professionals are not well defined. Intentional or not, breaches of ethical behavior seem to happen frequently in EMS. The consequences of these acts can be detrimental to patients, morale, career longevity, provider agencies, and the profession altogether. We will examine real cases in an effort to discover a consensus on behavior the audience believes to be appropriate for EMS professionals.

(1.0 hour CE – Preparatory)

C29 – "ALL TIED UP" - RESTRAINING THE OUT OF CONTROL PATIENT

Jon Politis, MPA, NREMT-P - Chief of Colonie EMS, Latham, NY

Restraining patients is "risky business" for all EMS Providers. Often the request to restrain a patient is in the context of a police incident where a patient must be transported for evaluation after being "tased". Sometimes, restrained patients die while in restraints enroute to the hospital. This presentation reviews the common causes of "excited delirium", how tasers work, risk factors for sudden death while restrained and the EMS "restraint continuum". This presentation also discusses NAEMSP guidelines for EMS restraint.

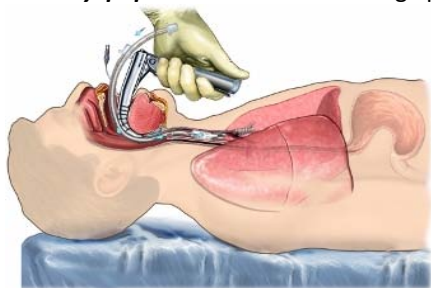
(1.0 hour CE – Operations)

C30 – AIRWAY CASE STUDIES - "WHEN THE SIMPLEST THING MADE THE BIGGEST DIFFERENCE"

Jason Dush, CCEMT-P, FP-C, Arlington Fire Department, CareFlight, Arlington, TX

Back by popular demand! Ensuring quality in pre-hospital airway management is challenging because the generally fast-paced process occurs in a less-than-ideal setting with bad lighting, limited space, and under demanding circumstances. Research increasingly suggests that pre-hospital intubation may be non-beneficial and perhaps even detrimental to the care of some trauma patients. In a case study format, we will highlight core measures of patient safety, timeliness, oxygenation and ventilation. Our biggest challenge as providers, is deciding when airway skills are right for the patient. When you pull out your "airway bag" or "tool box" what are you going to do?

(1.0 hour CE – Airway Management)



C31 – "KIDZ PLAY" - PEDIATRIC PATIENT CARE

Deb Von Seggern-Johnson, NREMT-P - UNMC EMS/Trauma Coordinator, Omaha, NE

"Grandpa lived a long, full life. He even had a happy look on his face when he went. It was a blessing". Sounds good for Grandpa, but those are not the kinds of words you hear when you encounter "Little Johnny". In fact, we want all of our kiddos either yelling or crying when we arrive, don't we? Pediatric emergencies are, without doubt, some of the most emotional type of cases we can experience in our careers as an EMS provider. In this session, we will discuss the importance of conducting certain aspects of your assessment prior to even touching your patient, and when it all goes wrong, dealing with the loss of a pediatric patient. If you are serious about your approach to pediatric patient care, join Deb for this informative class. For "Little Johnny's" sake, you'll be glad you did.

(1.0 hour CE – Patient Assessment - Pediatric)

BONUS CE GENERAL SESSION: 5:15PM – 6:15PM

C32 – SAVING LIVES - "ONE COMMUNITY AT A TIME"

Jerry Allison, MD, Elk Grove, CA

You want to make a career in EMS? As the frontline health professionals in our community, the EMS team is in an ideal position to participate with public health programs in recognition, screening, education, treatment, and referral of high risk patients to appropriate resources. With disasters, Infectious diseases, obesity, physician shortages, and budget cuts, EMS is faced with more and more challenges and responsibilities each year. To reduce the demand on the system and to maximize resources the EMS of tomorrow will have to focus as much on prevention as it does on saving lives. In this presentation, we will discuss the future of EMS, and the call for integration of EMS in public health.

(1.0 hour CE – Preparatory)



Sunday, May 1, 2011

GENERAL SESSION: 9:00AM – 10:00AM

C33 – WHY WE LAUGH!

Craig Rhyne, MD FACS, EMS Region III Medical Director, Lubbock, TX



The things we laugh at reveals a great deal about ourselves. Laughter is more complicated -- and bizarre -- than you might think. It is inherent in our nature to laugh. But a close look at what we find funny actually reveals many of the inherent characteristics of human emotions and fears. Humor in the workplace can be either a constructive exercise in team building, or can adversely affect our relationships with others. Understanding the difference can be vital to the morale of your EMS family. Humor brings the balance we need to get through the turbulence of life comfortably, and **"You don't stop laughing because you grow old. You grow old because you stop laughing."** This is a general session you don't want to miss!

(1.0 hour CE – Preparatory)

BREAKOUT SESSIONS: 10:30AM – 11:30AM

C34 – "EENIE MEENI MINEE MOE"

Deb Von Seggern-Johnson, NREMT-P - UNMC EMS/Trauma Coordinator, Omaha, NE

Eenie, meeni, minee, moe,

Pick which patient needs to go.

If he hollers tell him no,

It's the quiet ones that steal the show!

Wish it was that simple? Well you just arrived on the scene of an **"Oh My Gosh-What are we going to do-What do we do first- Somebody tell me they are in charge!"**



situation. Time to shout out that comfortable word you learned in EMS school. TRIAGE, in the simplest of terms, helps you determine the patients who are likely to live, regardless of what care they receive; those who are likely to die, regardless of what care they receive; and those for whom immediate care might make a positive difference in outcome. Join Deb in this interactive session that will take you through the very initial steps of being a triage officer and show you what it takes to be a good one.

(1.0 hour CE – Patient Assessment)



C35 – YIKES! - "I SHOULDN'T HAVE GOTTEN OUT OF BED THIS MORNING!"

Julie Bacon, RNC, BA, CPEN, N-CPT, Flight Nurse – All Children's Hospital, Oakland, FL

EMS is always challenging - but some days our skills are put to the test! This lecture will focus on some of the "common uncommon" found in the pediatric/neonatal population that will make your toes curl". Are you ready for – “This newborn doesn't look right”. “Are those intestines”? “Oh, no - my patient has swallowed 42 cents"! What do I need to worry about and what are my first interventions? Join Julie for this enlightening session of quick case studies on things you don't see every day (thank goodness!)

(1.0 hour CE – Special Considerations - Pediatrics)

C36 – I HAVE THIS "GUT FEELING!"

John Hill, EMT-P - Director of Emergency Medical Services, Spirit Lake, IA

“Gut Almighty, something is wrong, but I can't quite figure out what it is.” Whatever the cause, it could be life-threatening and rapidly fatal. Acute abdominal pain is often difficult to assess and treat. In this revealing presentation John will systematically review the anatomy and physiology of the abdominal organs, dive both feet first into how to properly assess a patient presenting with abdominal pain, quickly determine what needs to be done, and where they need to be. Learn to describe the differentiating signs and symptoms of abdominal pain so you can make better decisions on the different treatment modalities.

(1.0 hour CE – Medical Emergencies)

C37– "HOW SWEET IT IS...OR NOT"

Dale Kester, MD, EMS Region III Board Member, Tucumcari, NM

Diabetes affects the utilization of the principal source of fuel for our bodies. Diabetes mellitus is virtually epidemic, and diabetics utilize emergency services at least twice that of the non-diabetic population. An explosion of new research is vastly changing our understanding of this condition and giving us new clues about how to attack it. In this session, Dale will present an overview of normal glucose metabolism and physiology including the role of glucagon. This will include glucose abnormalities, including hypoglycemia, hyperosmolar hyperglycemia and DKA (diabetic ketoacidosis) and interactive clinical scenarios as they relate to pre-hospital assessment and management, including pitfalls of what appears to be simple hypoglycemia.

(1.0 hour CE – Medical Emergencies)

CLOSING KEYNOTE ADDRESS: 11:45AM – 12:45PM



C38 – (PART II) “THE POWER TO BE BETTER”

Steve Murphy, EMT-P, Battalion Chief - University Place Fire Department, Tacoma, WA

What would happen if you had the “power of 10%”? To improve ourselves, we do not need to tackle everything all at once. In fact, expecting a 100% total transformation is unrealistic and will set us up for failure. We will get much greater results by concentrating on small areas since all aspects of our lives are connected! Sometimes it's the smallest decisions that can change your life forever. The power of 10%! **I'm never going to learn this new technology....so why even make the effort? Our team will never be the top performer....so why even worry about improving at all? I can't give anything close to what they need....so why give at all? I don't have much extra time....so how can I possibly make a difference? I can't solve the world's problems....so why even try?** But what would happen if... you **gave 10%** more often to those in need? Then, you would bless others through the collective efforts of many. You **spent 10%** more time on your personal development? Then, you could enhance your job

performance and your career. You **spent 10%** more time with your family? Then your whole family would benefit. And, what if you **did 10%** more to go after your goals? Then, you would find that over time, **you could achieve the unimaginable!** Let the power of 10% now allow you to enjoy your life's journey!

(1.0 hour CE – Preparatory)



EMS REGION III "PARTNERS FOR LIFE" CONFERENCE

Registration Form

COMPLETE THIS FORM AND . . .

Mail with payment or copy of purchase order to:
EMS Region III • PO Box 1895 • Clovis NM 88102-1895

Website: www.emsregion3.org

Fax with credit card number or copy of purchase order to: (575)769-3485

Questions: conference@emsregion3.org or phone (575)769-2639

Please type name/affiliation as you wish them to appear on your name badge:

FIRST NAME: _____

LAST NAME: _____

AFFILIATION: _____

HOME ADDRESS: _____

SHIPPING ADDRESS (if different from above) _____

CITY STATE ZIP: _____

DAYTIME PHONE: _____

MOBILE PHONE: _____

Special Note: Confirmation will be sent via email:

EMAIL: _____

Please check off the Pre-conference Workshops you will be attending:

Workshops starting Monday, April 25

- P01 – Basic Extrication \$260
- P02 – Wildland Firefighting \$240
- P03 – Advanced Medical Life Support (AMLS) \$165
- P04 – Pediatric Advanced Life Support (PALS) \$170
- P05 – Rope Rescue: Awareness and Operations \$250
- P06 – Basic and First Responder Refresher \$130
- P07 – EMT-Intermediate Refresher \$130
- P08 – Paramedic Refresher \$285
- P09 – BLS for Healthcare Providers Renewal \$60

Workshops starting Tuesday, April 26

- P10 – Tactical Combat Casualty Care Course (TCCC) \$275
- P11 – Introduction to ECG Recognition (Pre-ACLS) \$85

Workshops starting Wednesday, April 27

- P12 – Advanced Cardiac Life Support (ACLS) \$155
- P13 – PEARS \$120
- P14 – PHTLS Basic and Advanced Course \$185

Workshops starting Thursday, April 28

- P15 – Pediatric Education for Prehospital Professionals (PEPP) BLS \$145
- P16 – Acupressure Workshop \$50
- P17 – Step Out of Pain – The Rossiter Way \$60
- P18 – Hands-On Heart and Lung Lab \$100

Which Core Conference Sessions are you attending? (Please X your classes)

- Friday, April 29, 2011 Opening Keynote Address C01
- Friday, April 29, 2011 Morning Breakout Sessions C02 C03 C04 C05
- Friday, April 29, 2011 Afternoon Breakout Sessions C06 C07 C08 C09
- Friday, April 29, 2011 Afternoon Breakout Sessions C10 C11 C12 C13
- Friday, April 29, 2011 Late Afternoon General Session C14
- Saturday, April 30, 2011 Morning General Session C15
- Saturday, April 30, 2011 Morning Breakout Sessions C16 C17 C18 C19
- Saturday, April 30, 2011 Early Afternoon Breakout Sessions C20 C21 C22 C23
- Saturday, April 30, 2011 Late Afternoon Breakout Sessions C24 C25 C26 C27
- Saturday, April 30, 2011 Late Afternoon Breakout Sessions C28 C29 C30 C31
- Saturday, April 30, 2011 Bonus Late Afternoon Session C32
- Sunday, May 1, 2011 Morning General Session C33
- Sunday, May 1, 2011 Morning Breakout Sessions C34 C35 C36 C37
- Sunday, May 1, 2011 Closing Keynote Address C38

Registration Fees (please check one)

	By April 1	April 2 to May 1
<input type="checkbox"/> Core Conference Registration Fee	\$225	\$275
<input type="checkbox"/> Squad Rate Fee (7 or more)	\$200	\$275
<input type="checkbox"/> NM EMT Association Member Fee	\$200	\$275
<input type="checkbox"/> Daily Rate Fee	\$175	\$175
<input type="checkbox"/> Thurs. Night Social Tickets # _____	\$ 10	\$ 10
<input type="checkbox"/> Friday Night Cookout Tickets # _____	\$ 20	\$ 20

(If you register for the core conference your meal tickets/events are included)

- A **Conference Fees** \$ _____
- B **Pre-conference Proc. Fee*** \$ _____
- C **Pre-conference Class Fee/s** \$ _____
- D **Extra Thurs. Social Ticket/s** \$ _____
- E **Extra Fri. Cookout Ticket/s** \$ _____

TOTAL AMOUNT ENCLOSED \$ _____

T-SHIRT SIZE: (Please circle one) S M L XL XX XXX

Payment Information:

____ Enclosed is my check for \$ _____ payable to EMS Region III

____ Enclosed is my purchase order # _____ for \$ _____

____ Charge my: VISA MasterCard Discover

Card # _____

Expiration Date _____

Billing Address _____

Card Holder Name _____

Daytime Telephone _____

Authorized Signature _____

PLEASE DO NOT WRITE IN THE FOLLOWING BOX – THANK YOU!

Check #	MO#	Credit Card	PO #	Conf.#
---------	-----	-------------	------	--------